



Software

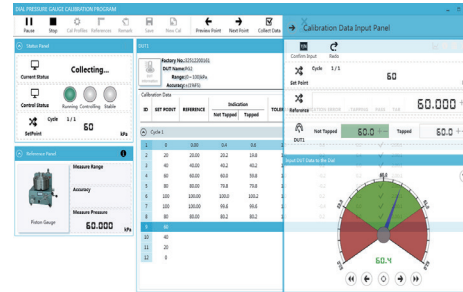
Additel 95XX Series

ACal

ACal is a pressure calibration system running under network environment, it has a simple and friendly interface and supports the cooperation of Multi-user. This software assist with automated and semi automated calibrations as well as a powerful instrument management features.

Main features

- Supports multi-users and network environments
- Calibration and asset management
- Simple user interface
- Scanning and printing of QR codes
- User definable permissions and access levels
- Preset test configurations
- Can calibrate variety pressure instruments
- Can calibrate several instruments at a time
- Calibration planning and scheduling
- Certificate management and creation
- Certificate customization

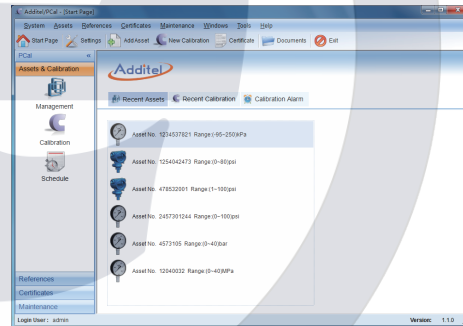


9506 Additel/PCal

The Additel PCal Pressure Calibration software is used with the 681 pressure gauges, 672 calibrators, and any of the 9XX pumps.

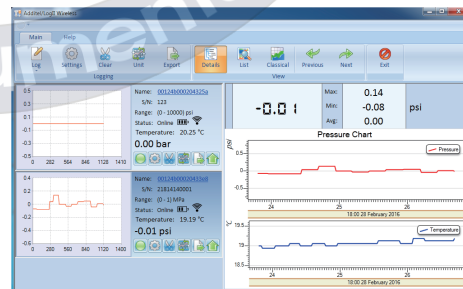
Semi-automated calibration of pressure gauges, transmitters, transducers and other pressure devices can be performed.

Software can be used to manage reference standard instruments and devices under test, as well as generate and customize a calibration certificate.



9502 Additel/Log II & 9503 Additel/Log II Wireless

Additel/Log II is a real-time data logging and graphical software for the ADT681 series digital pressure gauges and the ADT672 series digital pressure calibrators. Data can be recorded in real-time and for the ADT681 data logging version, recorded results can be uploaded. After results are stored, they can be exported to a customizable report showing pressure and ambient temperature. Each real-time test can be tagged with a unique record name.



Additel/Log II Wireless is a real-time data logging and graphical software for the ADT680W series wireless digital pressure gauge. Data can be recorded in real-time and historical data in the gauge can be uploaded. After results are stored, they can be exported to a customizable report showing pressure and ambient temperature. Each real-time test can be tagged with a unique record name.

The software lets you acquire data to your PC. You can choose to display the real-time or historical pressure measurement data in a table or in a graph.

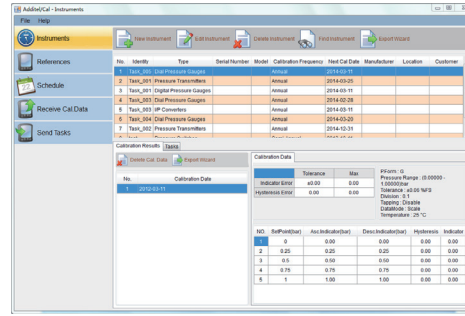


9510 Additel/Cal

Task management software for the 22XA series multifunction process calibrators and the 761 series automated pressure calibrators.

Additel/Cal was designed specifically for task management of temperature and pressure calibration.

The main features include establishing a database of all reference and test instruments, maintaining a customer database, creating, uploading and downloading calibration tasks, generating a calibration report, and customizing the calibration certificate.



9500 Additel/Land & Additel/Land Wireless

With Additel/Land software, you may download test results stored in the internal memory of Additel calibrators to a PC, and export the results to an excel file. It is a free software package and can be downloaded at www.additel.com.

